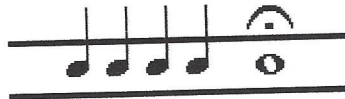




Whistle Signals used by the Glengarry Light Infantry and other light infantry units of the British Army during the War of 1812

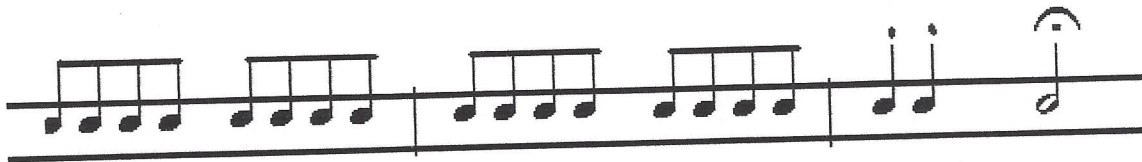
From the book, "*Instructions for the Formation and Exercise of Volunteer Sharp-Shooters*,"
by Captain Barber, Commanding the Duke of Cumberland's Corps of Sharp-Shooters.
Originally printed for T. Egerton, Military Library, Near Whitehall, 1804.

The Enemy is Discovered



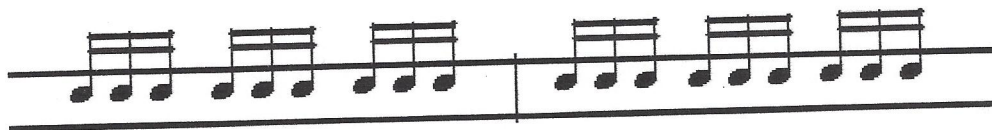
This signal is used by the Officer or NCO to warn the platoon or company that the enemy is near.
If the enemy are within musket range, then the signaler would also clap his hands afterwards.

Advance



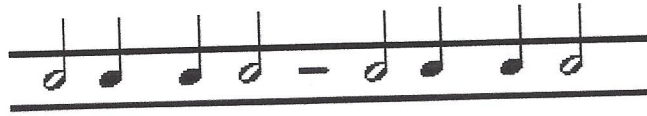
This is the whistle signal used by the Officer or NCO to order his line of soldiers to move forward.

Retreat



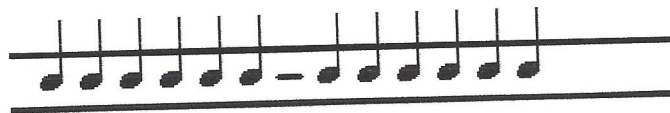
This is used by the Officer or NCO to order his line of soldiers to withdraw or move backwards.

Take Ground to the Right



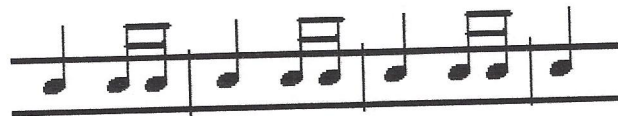
This signal orders a platoon or section of soldiers to move to the right. This command would usually be followed by a "*Halt*" signal.

Take Ground to the Left



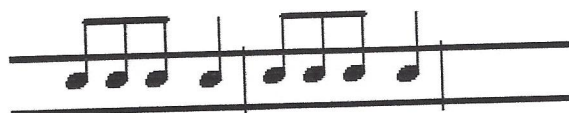
This signal orders a platoon or section of soldiers to move to the left. This command would usually be followed by a "*Halt*" signal.

Commence Firing



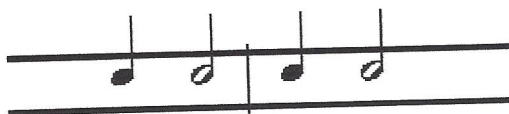
This orders the soldiers to aim and fire at the enemy. When working in pairs, the men spot targets for each other. When in extended ranks, they may be given specific instructions or they may choose their targets. When given after the order to "*Advance*," it means to advance rank through rank, and fire as each rank reaches it's position in front of the other.

Cease Firing



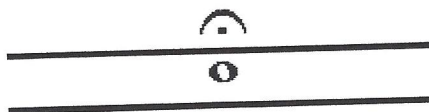
This orders the soldiers to stop firing. If a soldier has just finished a shot, he will automatically reload his musket and wait for the next order. Light infantry always reload without waiting for the instruction to do so.

Halt



This is the whistle signal used to order a group of soldiers to stop moving. This command is generally given after an order to "*Take Ground*" left or right. Sometimes it will be given on it's own, followed by the "*Close*" signal. This is used when the men are in extended ranks, and the Officer or NCO wants them to close together and form pairs.

Alarm or Close



This used by an Officer or NCO to get the attention of his entire group of men. When preceded by the "*Halt*" signal, it generally means Stop and Come together. If the men are in extended pairs, then it means to close up ranks.

- [Return Main](#)
- [Whistle Signals](#)
- [Regt de Meuron 1781-1813](#)
- [Regt de Meuron 1813-1816](#)
- [Photo Gallery](#)
- [War of 1812](#)
- [Cooke's Mill](#)
- [Laura Secord](#)
- [Musket Amunition](#)
- [Platoon Exercise & Musketry](#)