

Incline to the Right.



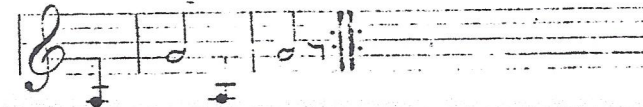
Incline to the Left.



Alarm



Halt



On discovering an Enemy.



The Enemy is Infantry.



The Enemy is Cavalry.



The Enemy has both Infantry & Cavalry.



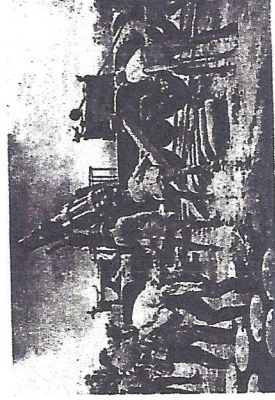
Assembly of Officers.



REGULATIONS
FOR
THE EXERCISE OF RIFLEMEN
AND
LIGHT INFANTRY
AND
INSTRUCTIONS FOR THEIR CONDUCT
IN
THE FIELD

PRINTED FOR THE WAR OFFICE
1814

The Naval & Military Press Ltd
published in association with
FIREPOWER
The Royal Artillery Museum
Woolwich




Published by
The Naval & Military Press Ltd
Unit 10 Ridgewood Industrial Park,
Uckfield, East Sussex,
TN22 5QE England
Tel: +44 (0) 1825 749494
Fax: +44 (0) 1825 765701
www.naval-military-press.com

in association with

FIREPOWER

The Royal Artillery Museum, Woolwich
www.firepower.org.uk



The Naval & Military Press

MILITARY HISTORY AT YOUR FINGERTIPS

... a unique and expanding series of reference works

Working in collaboration with the foremost regiments and institutions, as well as acknowledged experts in their field, N&MP have assembled a formidable array of titles including technologically advanced CD-ROMs and facsimile reprints of impossible-to-find rarities.

In reprinting in facsimile from the original, any imperfections are inevitably reproduced and the quality may fall short of modern type and cartographic standards.

HORSE GUARDS,

1st August, 1798.

The original of the following Work, written by a German Officer of distinction, and much military experience, has been perused by His Royal Highness the COMMANDER-IN-CHIEF, and found to contain many excellent rules and observations, adapted to the usual modes of carrying on active service in the field, and much useful instruction to young officers, not familiarized by practice to the arduous duties to be performed in the face of an enterprising enemy: His Royal Highness has therefore been pleased to give directions for its being translated into English, in order that the officers of the army at large, and particularly those who may not have had the advantage of much personal experience in the field, may, by a studious attention to the various examples therein stated, and

and to the useful lessons given for their conduct, imbibe that degree of military skill and information, which will enable them to discharge their duty to the satisfaction of their superiors, and their own honour, on the most trying occasions.

WILLIAM FAWCET,

Adjutant-General.

REGULATIONS

FOR

THE EXERCISE OF RIFLEMEN,

&c. &c.

PART I.

OF THE EXERCISE.

WHEN a company or battalion of riflemen is to act with closed ranks and files, the same regulations which are given to infantry in general, serve for them. And before the soldier is instructed in the manœuvres of light troops, he must be taught how to hold himself, to march, face, wheel, &c. as in regular infantry.

CHAP.